



SILVER BEACH CREEK BIOSWALE TOUR

A SELF-GUIDED TOUR OF HARD-WORKING BIOSWALES AND MORE.

Come see Whatcom County's latest pollution control investments!

1

Lahti Drive
Bioswale at
Britton Rd.



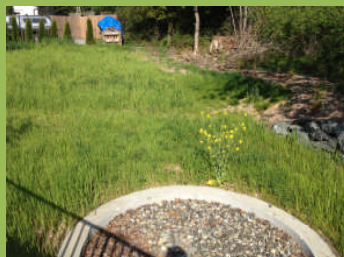
2

West Tributary
Channel
Restoration on
Hillsdale Rd.



3

West Tributary
Bioswale on
Brownsville Dr.



4

Silver Beach
Creek Bioswale
at Megan Lane



SATURDAY, JUNE 8, 2013

9 AM – 12 PM

*Look for tents and signs marking
four stations*

Join your neighbors for an in-depth look at bioswales and channel restoration projects in the Silver Beach Creek watershed. Enjoy family-fun activities with experts and discover:

- ✓ How a bioswale works
- ✓ Why it is important
- ✓ How you can help

We will provide a map and refreshments.

***Prizes! Special Incentives!
Games!***

Sponsored by: Whatcom County Public Works & WSU Whatcom County Extension

Contact: Cathy Craver, Whatcom County Public Works Stormwater
(360) 715-7450 or ccraver@co.whatcom.wa.us

